

Affordable Landscaping

Presenter: Wendy Santiago



COWLITZ COUNTY
MASTER GARDENERS



WHAT IS AN AFFORDABLE LANDSCAPE?



OBJECTIVE: ENCOURAGE YOU TO LANDSCAPE
WITH A PURPOSE AND A PLAN

- Know what you want your landscape to do for you.
 - You don't serve your landscape.
 - Your landscape serves you.

\$100,000 to each class participant!!!

- What if \$100,000 was given to each of you to use however you want on your landscape...
- The money must be used on your landscape.
- What would you do?















CONTENTS:

- TIDY YOUR LANDSCAPE
- GIVE YOUR LANDSCAPE STRUCTURE
- IMPLEMENT YOUR PLAN

A photograph of a cluttered backyard. In the center, a house number '1716' is mounted on a post. To the left, there are several colorful buckets (red, green, yellow) and a black bag. A large pile of dry sticks and branches is on the left side. In the foreground, a wooden pallet is lying on the ground, surrounded by dry grass and debris. To the right, there is a wooden shed and a metal post. The overall scene is messy and overgrown.

#1 TIDY YOUR LANDSCAPE

WHAT DO YOU MEAN BY TIDY?

- Pick up any unused items
- Pick up natural landscape debris
- Mulch, mulch, mulch



Pick up any debris



Pick up natural landscape debris



MULCH
MULCH
MULCH

WHY MULCH?

- Keeps weeds down
- Keeps moisture in
- Improves soil
- Looks good

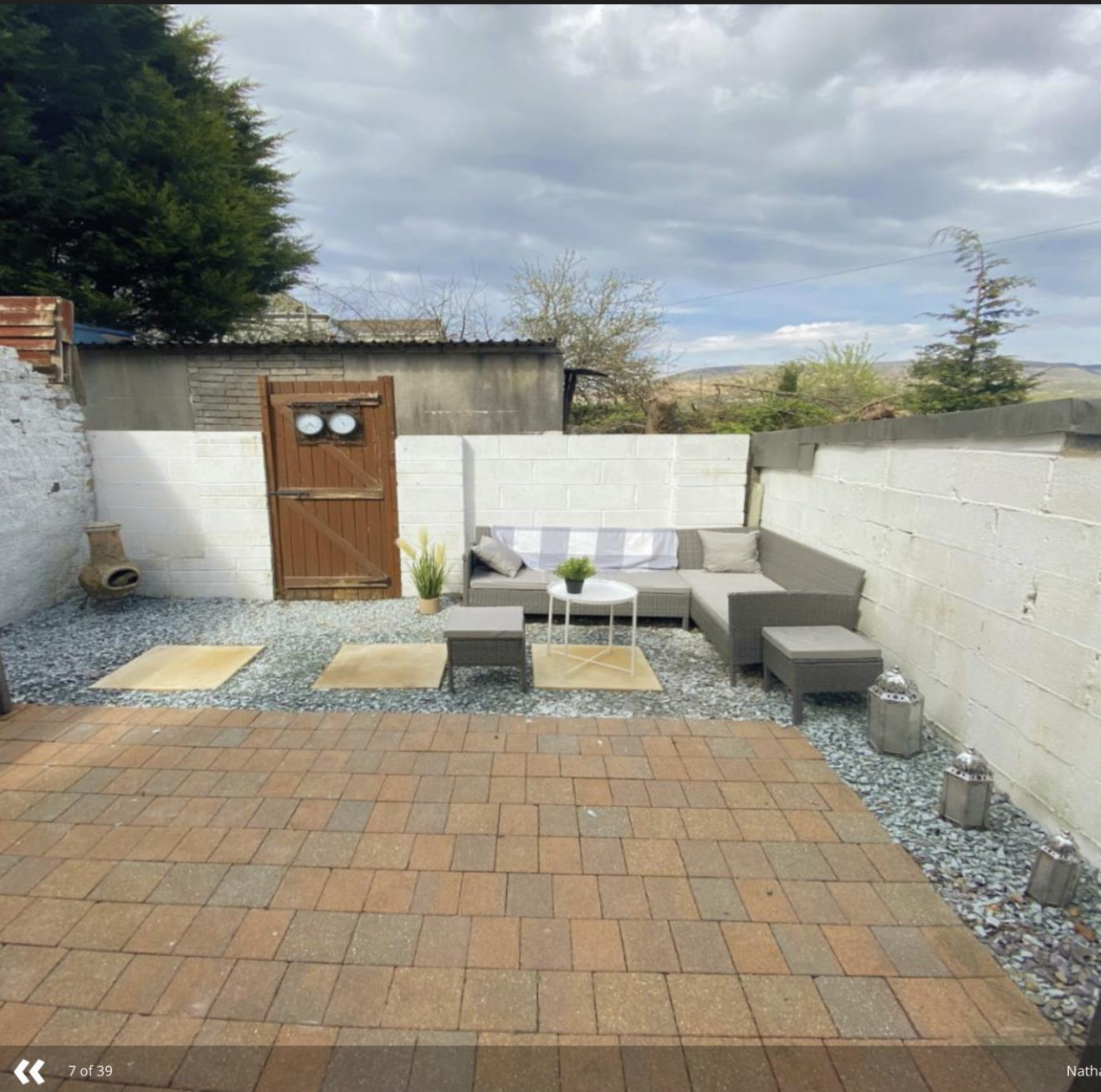
HOW DO I SHEET MULCH?

- Lay cardboard, newspapers, or other thick paper
- Wet the cardboard
- Lay 3-5" of mulch or woodchips











<< 22 of 39

@itsmejhp / Instagram

>>



<< 23 of 39

@itsmejhp / Instagram

>>



An aerial photograph of a formal garden. The garden is highly symmetrical, with a central lawn area. On either side of the lawn are rows of young trees planted in rectangular beds, bordered by low hedges. In the foreground, there are stone paths and a central circular feature, possibly a fountain or a well. The background shows more trees and a house with a chimney. The overall style is classic and structured.

#2 GIVE YOUR LANDSCAPE STRUCTURE

HOW DO I GIVE MY LANDSCAPE STRUCTURE?

- Create a Master Plan
- Create Hierarchy
- Use Repetition

P.U.E PER TRACT NO. 608 RMS 29 PG 31

3"X3" CHRISTY BOX
RM=493.50
INV=493.50 (N)
INV=493.00 (OUT)

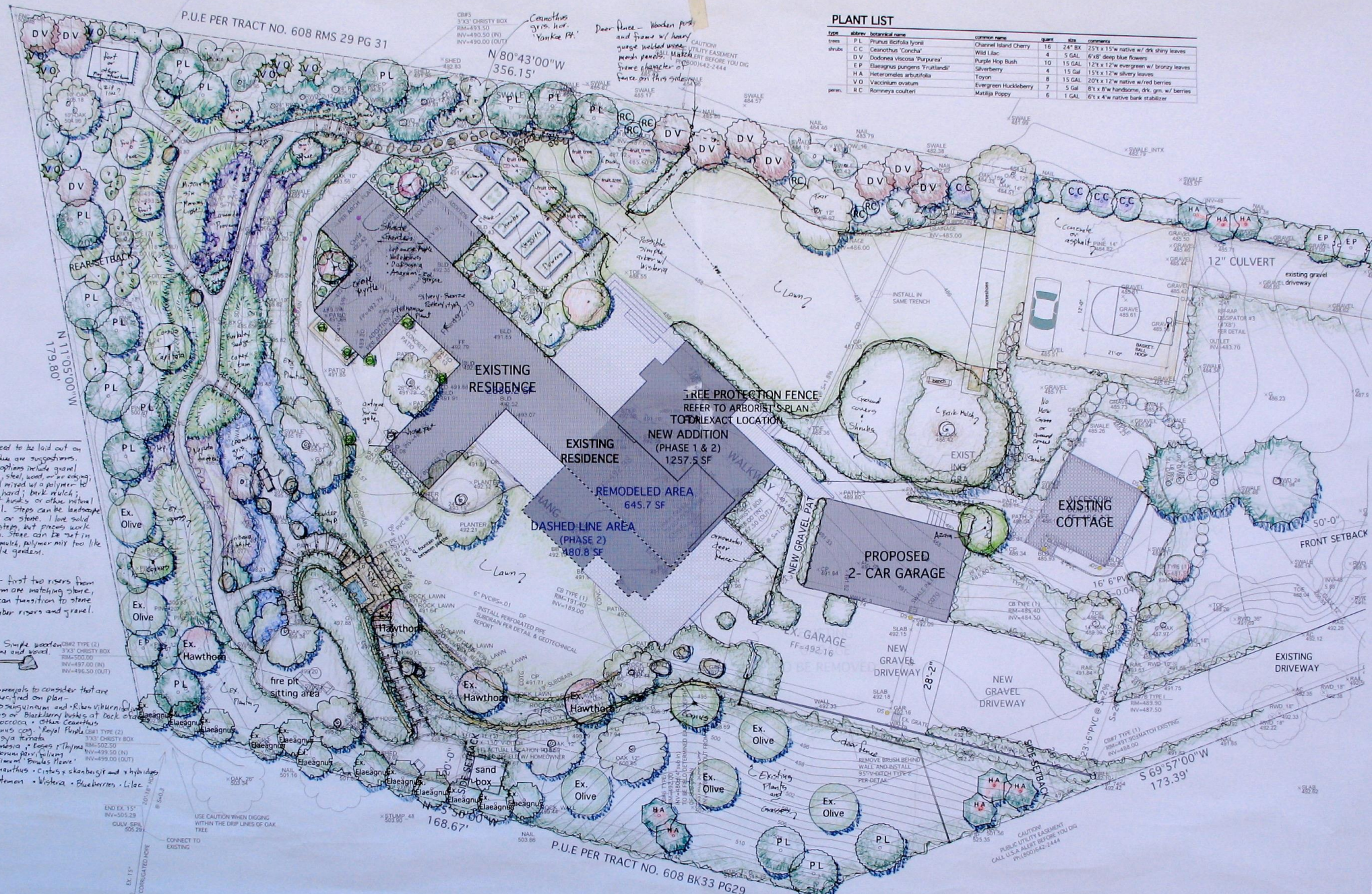
Caenothus
gr. var.
"Yankee Pl."

Door Frame - Wooden Post
and frame w/ heavy
gauge welded wire
mesh panels. Match
frame character of
fence on this side of
fence.

CAUTION
UTILITY EASEMENT
BEFORE YOU DIG
800/442-2444

PLANT LIST

type	abbrev.	botanical name	common name	quant	size	comments
trees	P.L.	Prunus bicolora lyonii	Cherry	16	24" EX	25' x 1.5" w native w/ drk shiny leaves
shrubs	C.C.	Caenothus 'Concha'	Cherry	4	5 GAL	6' H deep blue flowers
	D.V.	Dodonaea viscosa 'Purplea'	Purple Hop Bush	10	15 GAL	12' x 12" w evergreen w/ bronzy leaves
	E.P.	Elaeagnus pungens 'Tranströmii'	Silverberry	4	15 GAL	15' x 12" w silvery leaves
	H.A.	Heteromeles arbutifolia	Toyon	8	15 GAL	20' x 12" w native w/ red berries
	V.O.	Vaccinium ovatum	Evergreen Huckleberry	7	5 GAL	8' x 4" w hardstem, drk. grn. w/ berries
perenn.	R.C.	Romneya coulteri	Matilija Poppy	6	1 GAL	6' x 4" w native bank stabilizer



Notes

- Patios - need to be laid out on site. These are suggestions. Material options include gravel w/ stone, steel, wood, or an edging the soil covered w/ a polymer to make it hard, bark mulch, cement, boulders or other natural material. Steps can be landscape timbers or stone. I love solid stone steps, but prices work well here. Stone can be set in gravel, mulch, polymer mix too like by shade garden.
- Fountain - first two rivers from platform are matching stone, then can transition to stone or timber rivers and gravel.
- Bridges - Simple wooden spans and wood.
- Shrubs/Perennials to consider that are not specified on plan -
 - Phlox subulata and R. hibernica
 - Rubus or Blackberry bushes at back side
 - Yucca or other Caenothus
 - Cotinus sp. Royal Purple
 - Chlorophytum
 - Artemisia x Equisetum
 - Myrica parvifolia
 - Erythronium Boulders Plant
 - Comarostaphylis - citrus x skankbergit and hybrids
 - Ruscus - Vitis - Blueberries - Lilac

SITE PLAN

1/8" = 1'-0"

P.U.E PER TRACT NO. 608 BK33 PG29

CAUTION
PUBLIC UTILITY EASEMENT
CALL USA FIRST BEFORE YOU DIG
800/442-2444

Colors and Textures of Madagascar



The Lipman Family Madagascar Center with Anja, the Chameleon

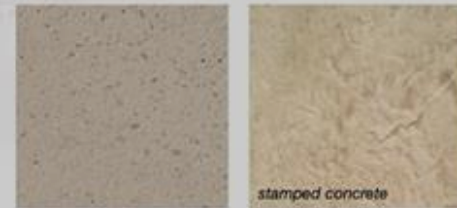
Madagascar's warm and welcoming Tropical Rainforest is the 'spine' of the LFMC, much like the spine of mountains that separate the eastern and western sides of the island. The north to south running mountains capture most of the rainfall from the moisture rich clouds coming off the Indian Ocean, leaving little moisture for the western side of the island.

The whole island is a precious gem of biodiversity. The moisture rich, eastern, tropical rainforest especially abounds with plant and animal species, making it one of the most bio diverse dense ecosystems in the world. The softer, people friendly plants of this rainforest are predominant in the public spaces and continue their natural drifts into the habitats, creating a seamless transition between the guests and habitats as much as possible. The intriguing plants, like Boabab tree, and other plants from the drier ecosystems found on the western side of the island, are represented in safe pockets within the center.

From November to April, Madagascar is hot and rainy. From May to October, it's cooler and dry. To reflect the many rivers and streams that carry all the rainfall on the island, a dry creek bed, as it might appear in the dry months, flows through the center, guiding



Proposed Materials



The Landscape Flows Through the Center

CREATE HIERARCHY





USE REPETITION

A garden scene featuring a pergola on the left, a gazebo in the background, and a variety of plants including purple lavender, pink flowers, and tall grasses. A fence runs across the middle ground. The text "#3 IMPLEMENT YOUR PLAN" is overlaid in white on a dark background at the bottom.

#3 IMPLEMENT YOUR PLAN









ARE YOU ENCOURAGED?

○ Know what you want your landscape to do for you.

- You don't serve your landscape.
- Your landscape serves you.

○ Try to complete one task in your garden this week, bringing you closer to your ideal landscape.

A dense forest scene with tall, slender trees and a thick carpet of ferns in the foreground. The lighting is soft and natural, suggesting a misty or overcast day. The text 'QUESTIONS?' is overlaid in white, sans-serif font in the lower-left quadrant.

QUESTIONS?